

+ SWISS MADE

pet+me®

Find us on Facebook:
fb.com/petandme.ch



ONLY THE ORIGINAL PET+ME® IS SO MULTI-FUNCTIONAL!



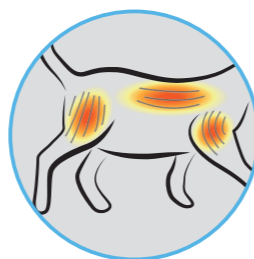
Cares for the coat, leaves it healthy and shiny.



Deep brushing, Massage, Shampooing.



Overall hair removal.



Soft massage, relieves tight muscles, stimulates the metabolism and helps healing of muscles, skin and joints.



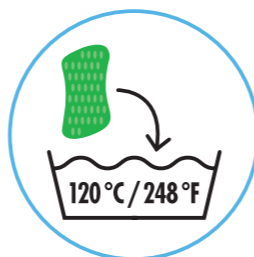
Strengthens the coat and stimulates the hypodermis



Removes hair from furniture, carpets, car seats and clothing.



Excellent for shampooing.



Washable in dishwasher or washing machine.



Vet approved



Swiscomed AG · Switzerland
info@petandme.ch
www.petandme.ch

SIMPLY THE BEST!

THE ORIGINAL SILICONE BRUSH!



+ SWISS MADE

pet+me®

REVOLUTIONARY
pet grooming brush
for cats · dogs ·
small furry animals



ONLY THE BEST IS GOOD ENOUGH FOR YOUR PET!



BLUE BRUSH - SOFT SILICONE - for:

- CATS with short hair
- RABBITS, all hair types
- Small breed DOGS with little or no undercoat
- All other small animals



GREEN BRUSH - SOFT SILICONE - for:

- CATS with long hair
- CATS with thick hair and undercoat
- Small breed DOGS with silky, long hair and soft undercoat



RED BRUSH - FIRM SILICONE - for:

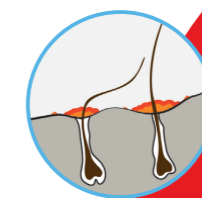
- Large breed DOGS
- DOGS with long hair
- DOGS with double coats
- DOGS with thick coats and undercoats



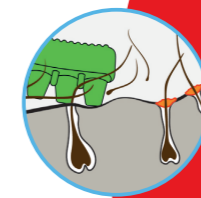
YELLOW BRUSH - MEDIUM SILICONE - for:

- DOGS, most short hair types
- DOGS with short, thick hair
- DOGS with short wiry coats
- DOGS with long silky hair and soft undercoat

PAINLESS SEBUM REMOVAL



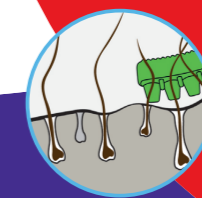
Dogs have sebaceous glands at the hair roots. When the upper layer of excess sebum dries and hardens, scales form an itchy and unpleasantly smelling layer.



Firm pressure can be applied without hurting the animal. The pet+me® is able to reach and loosen the encrusted sebum.



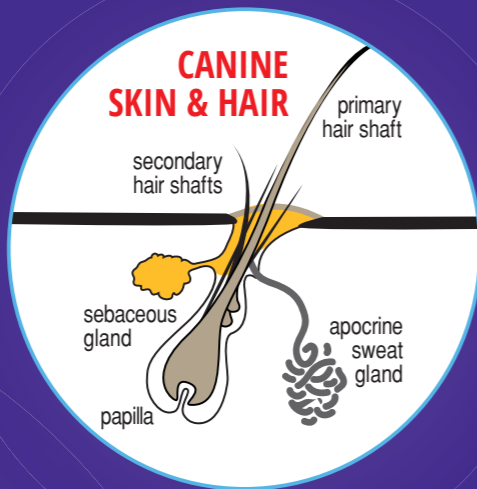
The now loosened sebum will cling to the silicone brush.



The smelly, irritating sebum is removed; the skin can breathe, leaving the coat clean healthy and shiny.

BREED SPECIFIC

Just as human hair varies, so does that of our pets. The pet+me® brush took years of extensive scientific research in order to achieve the right design to work effectively on breed specific coats and fur types, including knob lengths, silicone shore (firmness), and pet safety. This includes short and wiry, silky long, no undercoat fur, or very dense fur with a heavy undercoat. Not just for cats and dogs, pet+me® has the right brush to choose for all furry animals, including guinea-pigs, rabbits, hamsters, ferrets, and even horses.



MULTI-FUNCTIONAL

The longer knobs side is used for optimal hair removal and for removing scale from dogs and dander from cats.

Dogs; have sebaceous glands at the hair roots. When the upper layer of excess sebum dries and hardens, scales form, creating an unpleasant smelling layer. This layer can often produce an irritating itch that causes the dog to scratch with constant discomfort.

Cats; have dry skin and dander. They are their own personal groomers, but the excess loose fur frequently is digested, creating fur-balls. Some areas are difficult for cats to self-groom.

This is also the side to be used for massaging. Pressure can safely be applied with pet+me® to stimulate blood circulation and help promote a healthy, shiny, coat.

The shorter knobs side is used wet or dry to remove loosened hair from the surface of the animal's coat. This side is also excellent for removing hair from upholstery, carpets and fabric. By applying pressure, you can remove even the shortest of hair or lint. It is also excellent if used on fabric car seats!

WET APPLICATIONS

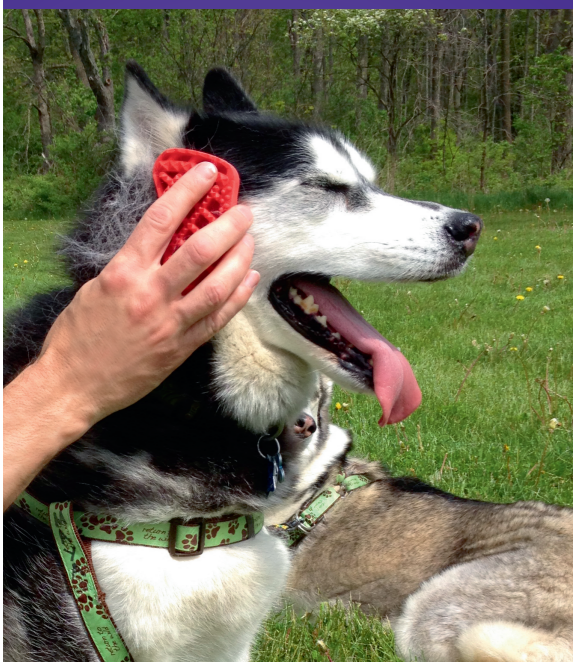
When pet+me® is wet, it glides easily through the coat creating a magnetic effect to remove fur, scales and dander.

Because cat fur may create static electricity, we recommend that for the first few brushings to very lightly dampen the brush for greater comfort to your pet.

Bathing time is the perfect time for pet+me®. The long knobs side of the brush assists in deeply and evenly distributing shampoo into the entire fur of your pet. It is especially recommended and effective when using medicated shampoos.

SIMPLE TO CLEAN

Cleaning pet+me® is easy. Simply hold it under running water and rinse. For optimal washing and sanitizing, toss it into the dishwasher or washing machine. It can be washed in very hot water. The pet+me® medical grade silicone endures up to 248 °F. These durable brushes come out looking like new and are guaranteed for a long life of use without discoloring, cracking or breaking.



SAFE & EFFECTIVE

The pet+me® brushes are only manufactured in the USA and Switzerland and are guaranteed to be 100% pure medical grade silicone, using only safe, pure colors in the manufacturing process. These flexible brushes are soft on sensitive skin, yet highly effective in removing fur and scales. Recommended by veterinarians and breeders, pet+me® can be used around sensitive areas such as the eyes, ears, mouth and underbelly without harm. It can safely be given to small children to brush an animal without harm to either of them.

